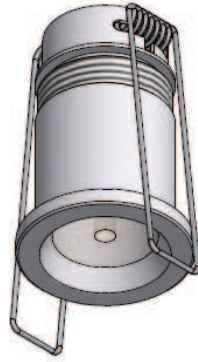
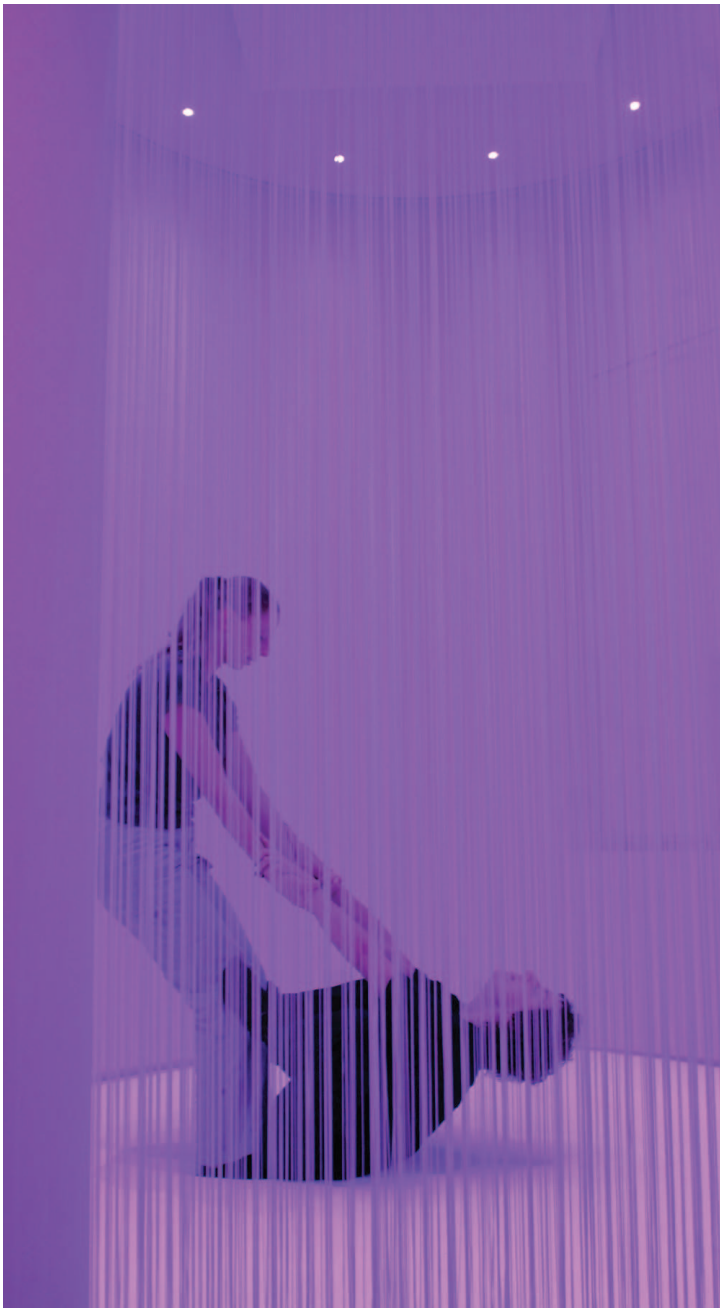







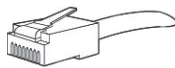
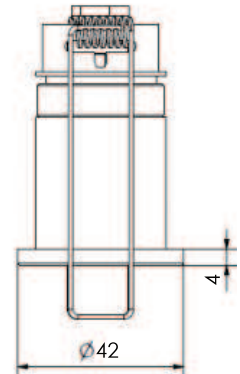
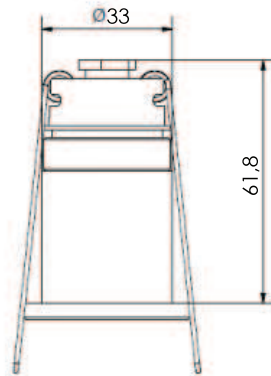
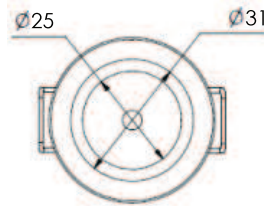


# Beamer Insert



-  Anodised
  -  IP 20
  -  Smart 3 channel drive 350 mA
  -  Mono: X-leds 350/700 mA  
RGB: 12/24/48 V DC
  -  Mono: 1 x 2.5 W  
RGB: 1 x 3.25 W
  -  Smart 3 channel drive 700 mA
  -  D: 37  
H: 75
-  RJ45 connector  
Standard for RGB devices



| Colour<br>Beam<br>Angle | Temp. | Red       | Green     | Blue      | Amber     | 3000 K    | 4000 K    | 6300 K    | RGB       |
|-------------------------|-------|-----------|-----------|-----------|-----------|-----------|-----------|-----------|-----------|
| 10°                     |       | 314151212 | 314151312 | 314151512 | 314151612 | 314155212 | 314155312 | 314155812 | -         |
| 30°                     |       | 314171212 | 314171512 | 314171512 | 314171612 | 314175212 | 314175312 | 314175812 | 314172112 |